

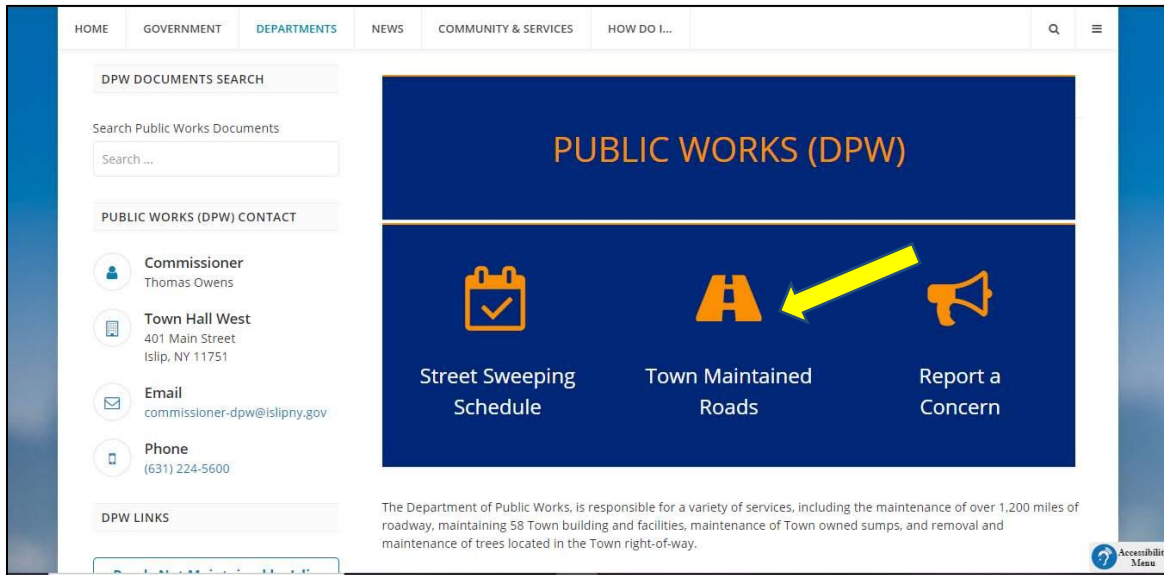


Town of Islip DPW Road Viewer Navigation Instructions

The Department of Public Works Road Viewer is an interactive map which enables you to determine who is responsible for maintaining a road within the Town of Islip.

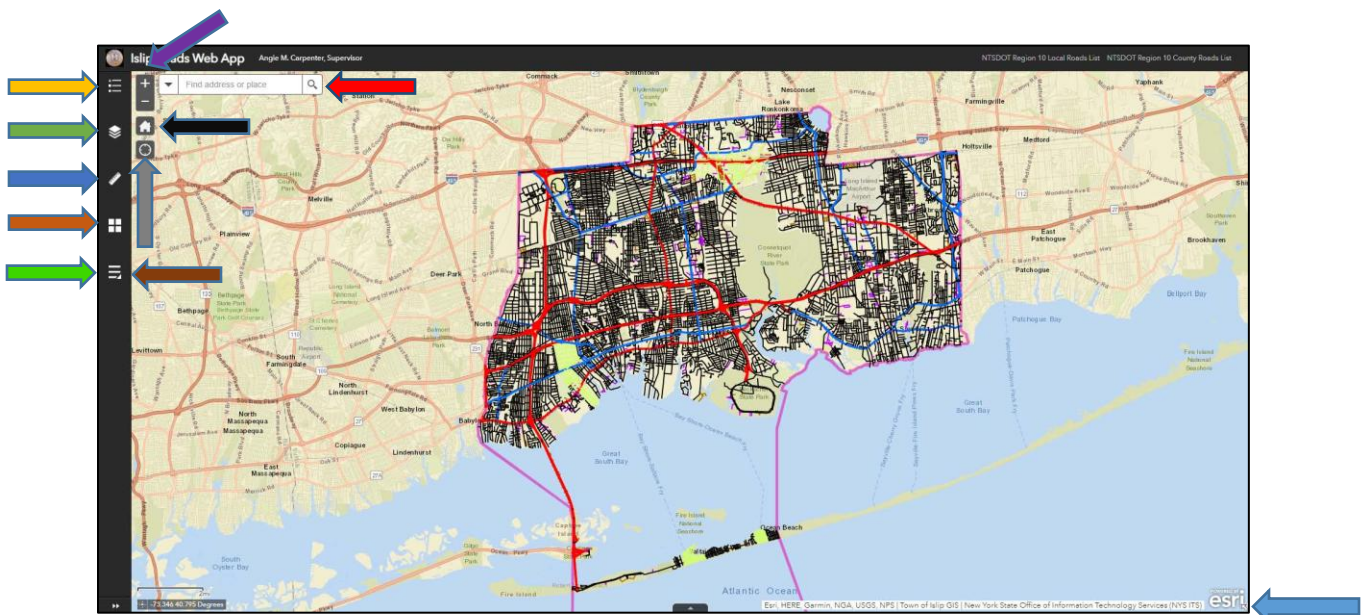
THE APPEARANCE OF A ROAD ON THIS VIEWER DOES NOT NECESSARILY MEAN THAT A ROAD IS DEDICATED.

To access the Road Viewer, click the link below and select "Town Maintained Roads".
<https://islipny.gov/departments/public-works-dpw>

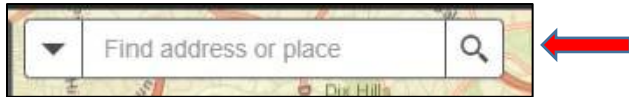


HOME SCREEN:

The colored arrows correspond to the sections below:



SEARCH BAR:

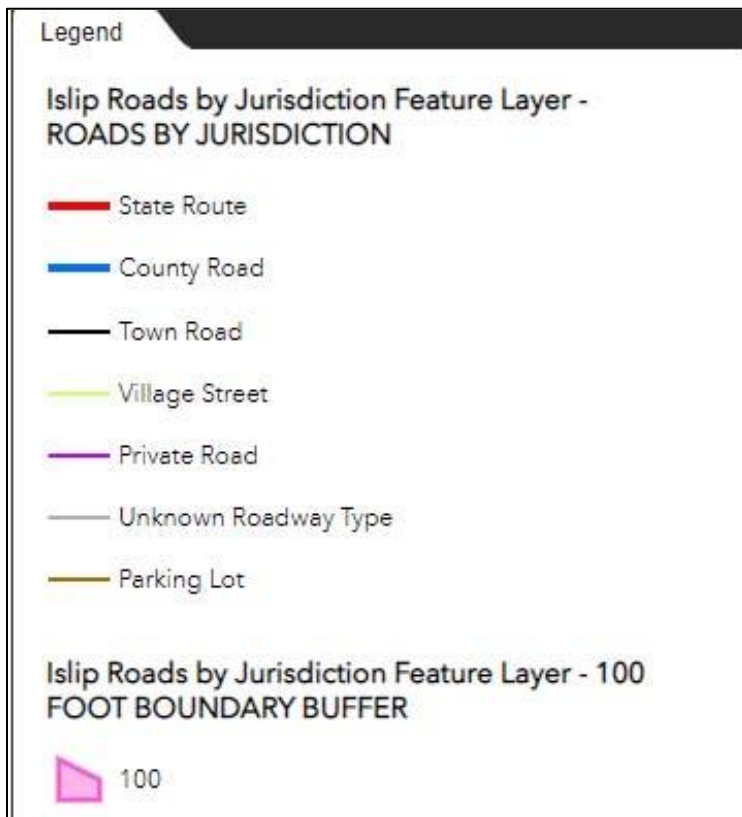


To find the address you need zoning information for enter the address into the *search bar* (located at the top of the **DPW Road Viewer**), which reads **Find address or place**. For example, to find Islip Town Hall enter *655 Main Street, Islip* into the search bar - the full address should appear for you to select from a dropdown menu below the search bar. Once the address has been fully displayed, click the magnifying glass in the corner of the search bar or press **enter** on your keyboard.

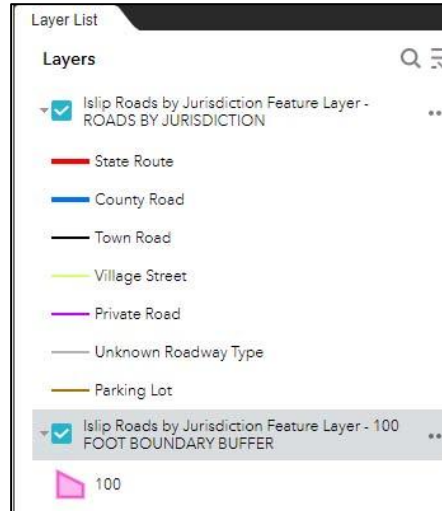
LEGEND:



The *Legend tool*, located in the top left-hand corner of the viewer, illustrates how roads are represented based on their jurisdiction. **State Routes** are shown in red, **County Roads** in blue, **Town Roads** in black, **Village Roads** in green, **Private Roads** in purple, **Roads of Unknown Jurisdiction** in grey, and **Parking Lots** in brown. Roads appearing within the **100-Foot Buffer of a Road Jurisdiction** can be selected using the *filter tool* (to be explained later).



LAYER LIST:



The *Layer List tool* (located on the left-hand side of the viewer) allows you to toggle between the layer that shows **Islip Roads by Jurisdiction** and the layer that shows a **100-Foot Buffer Zone of Islip Roads**. These layers can be turned *on* or *off* by *checking* or *unchecking* the box to the left of the layer's name. By clicking the three dots to the right of any layer, you can adjust the visual appearance of the map by: hiding the labels of features on the map, zooming to the full extent of a map layer, or adjusting a layer's transparency. To view how a particular layer is represented on the map, click the *arrow to the left* of the layer's name.

MEASUREMENT:



The *Measurement tool* (located on the left-hand side of the viewer) allows you to calculate distances, measure areas and find coordinates for specific locations on the map.

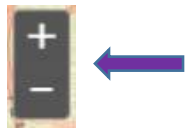
Click on the **ruler icon** to choose and select the type of measurement desired: *Area*, *Distance*, or *Location*. Next, left-click anywhere on the map to start the measuring path and to add additional points on the path, left-click again. To end the measurement, double left-click. You can choose the format of the results (i.e. miles, kilometers, etc.) before or after measuring. When choosing results for coordinates, **Degrees** will give latitude and longitude in only *degree* measurements, such as 40.74606; **DMS** will give precise measurements in *degrees, minutes, seconds format*, such as 40°44'45.71.

BASEMAP GALLERY:



The *Basemap Gallery*, also located on the left side of the viewer, contains various basemaps that can be used to best represent the data you wish to show. This tool allows you to change the background map displayed on the viewer. You can choose from the following: *ordinary street maps*, *aerial imagery*, *terrain maps*, etc.

ZOOM:



The *Zoom tool*, located along the left-hand side of the viewer, can be used to **magnify** (plus symbol) or **minimize** (minus symbol) the focus of your viewer. By magnifying, the viewer will focus in on the center point of your viewer. Minimizing the viewer will zoom out to show a wider area. These tools can also be accessed by using the *scroll-wheel* on your mouse.

DEFAULT EXTENT:



Clicking the *Default Extent tool*, located in the lower left-hand corner of the viewer, will return the viewer to its original scale – showing the entire Town of Islip and the surrounding area.

MY LOCATION:

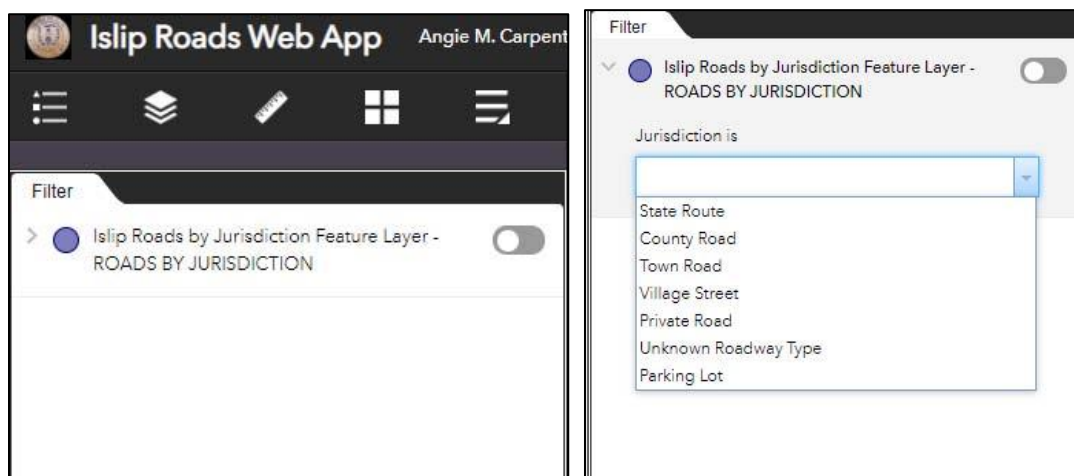


Clicking the *My Location icon*, also located at the lower left-hand corner of the screen, will cause a pop-up to appear at the top of your screen that asks you to allow the Islip GIS Portal to know your location. Once you allow access to your location, the viewer will zoom to your location and mark it with a blue dot.

FILTER:



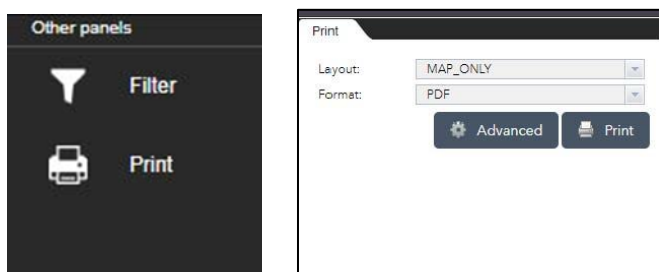
The *Filter tool* can be accessed by clicking the **more** icon (shown above-left). The filter tool allows you to filter out roads by jurisdiction. These jurisdictions include: New York State, Suffolk County, Towns, Villages, Private Roads, Parking Lots, and Roads of Unknown Jurisdiction. These filters can be accessed from the drop-down menu that appears by left-clicking the *arrow to the left* of the **ROADS BY JURISDICTION** tab.



PRINT:



The *Print tool* can be accessed by clicking on the **more** icon (shown above-left). Next, select the **print** tab and adjust the print settings to reflect what printer paper size (**Layout**) and file **Format** you wish to use. **Advanced** printer settings can also be adjusted from this menu. Once you have finished adjusting the settings, select **Print**.



SHOW MAP OVERVIEW:



The *Map Overview tool* is represented by a small arrow at the lower right-hand corner of the viewer (shown above). When you click the arrow a map of the surrounding area will appear with a dark grey box covering its' center (shown below). This grey box represents the extent of the map that is being shown on your viewer. To view this map overview in full screen mode, click the **maximize** symbol. You can click the **maximize** symbol again to take the map overview out of full screen mode when you are done. To hide the map overview, click the *arrow symbol* once more.

