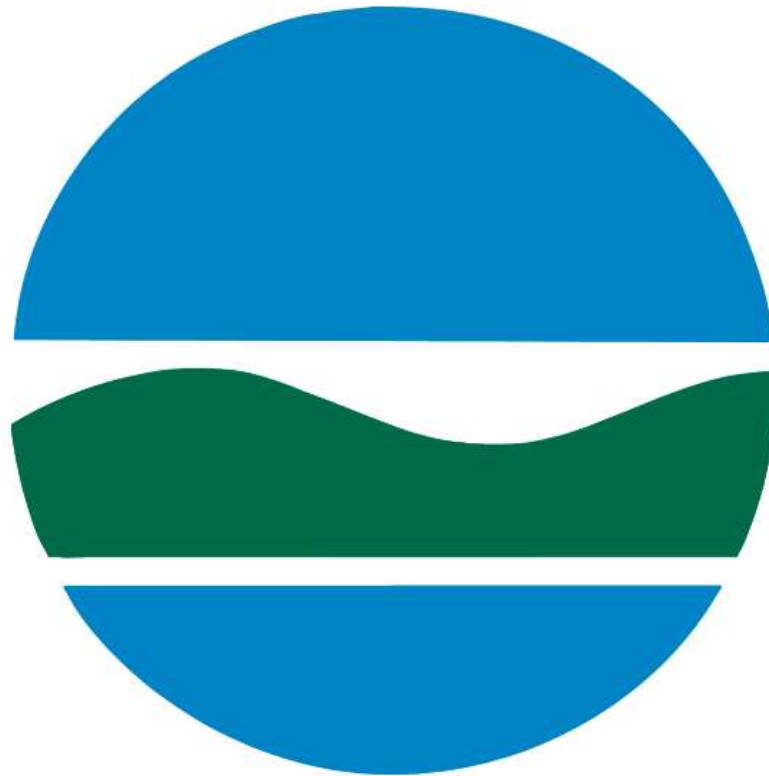


New York State Department of Environmental Conservation



Andrew M. Cuomo,
Governor

Joe Martens,
Commissioner

MEETING AGENDA

- Introduction, Public Participation
 - Bill Fonda, Citizen Participation Specialist, NYS Department of Environmental Conservation (NYSDEC), Region 1
 - Peter A. Scully, NYSDEC Region 1 Regional Director
- Draft Material Removal Work Plan
 - Ajay Shah, P.E. NYSDEC Regional Engineer Region 1
- Question & Answer and Comment Period
 - Bill Fonda, NYSDEC Region 1



Roberto Clemente Park Brentwood, Town of Islip

DRAFT MATERIAL REMOVAL WORK PLAN

PRESENTED BY: AJAY SHAH, P.E.
REGIONAL ENGINEER, REGION 1
New York State Department of
Environmental Conservation

OCTOBER 9, 2014

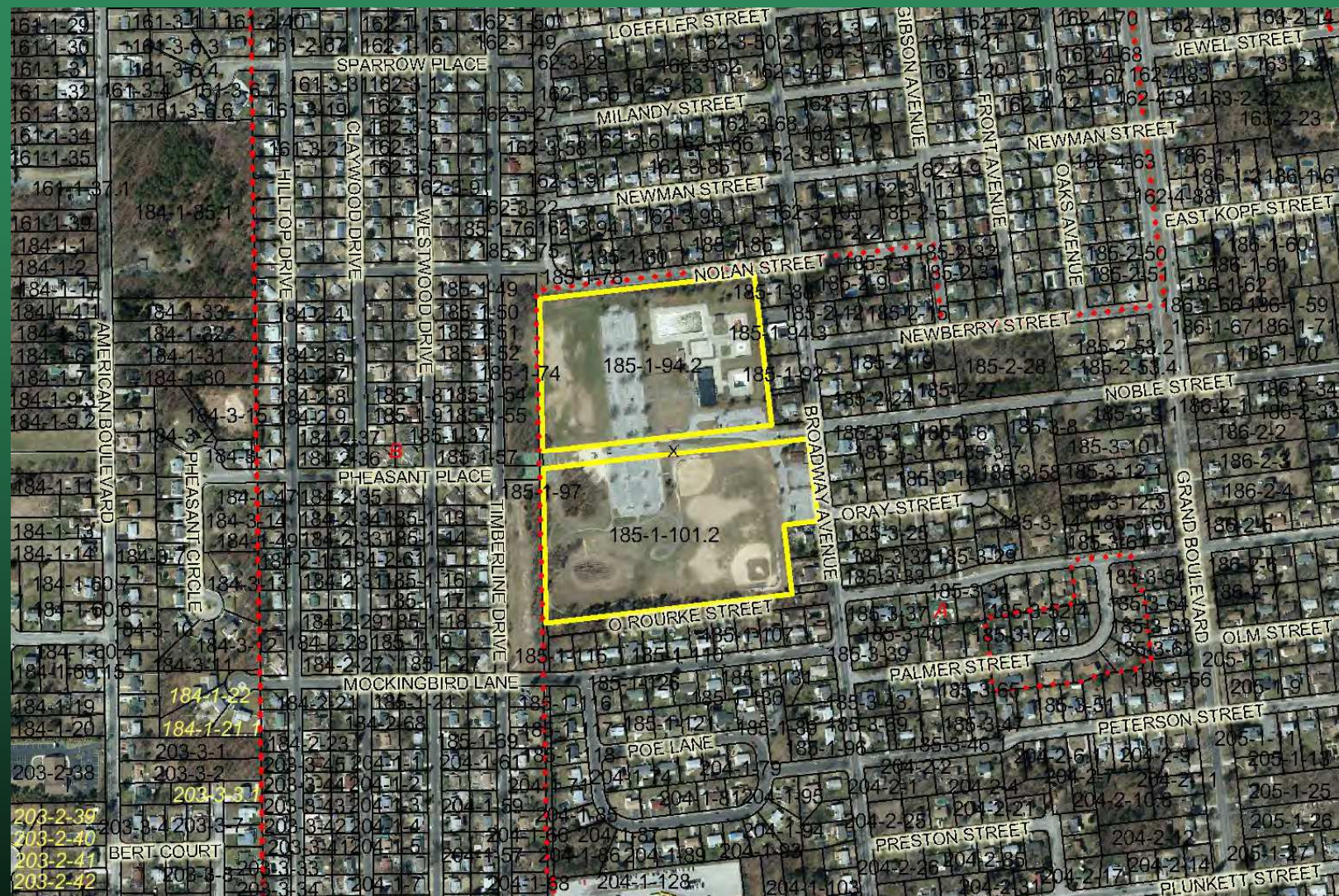


History And Background

- Roberto Clemente Park occupies 30 acres of property in the Hamlet of Brentwood.
- The site had been a sand mine under private ownership from 1944 to 1955.
- The land comprising the Park was acquired in separate parcels by the Town over a period of years beginning in 1962 and concluding in 1976.
- The park was designed and constructed during the period between 1978 and 1982.
- The park has been closed since May 2014 due to illegal dumping activities.



Surrounding Area



Aerial view of Roberto Clemente Park



Contaminated Fill at the Site

- Unlawful disposal of contaminated fill materials took place at the park in early 2014.
- Suffolk County District Attorney's Office initiated an investigation in April, which is currently ongoing.
- Fill materials were tested by an environmental consulting firm.
- Fill contains asbestos, elevated levels of Organic Compounds, Metals, Pesticides/PCBs, some of which exceed NYSDEC's Part 375 Soil Cleanup Objectives.



Site Condition in May 2014



Current Site Condition



Material Removal Work Plan

- All illegal fill material to be removed and disposed of at authorized landfills.
- Sampling to be performed after removal to confirm that no contamination remains.
- Sampling of groundwater to confirm no impacts. Additional water sampling to be done after completion of removal activities.
- Health and Safety Plan required to protect the community and site workers
- Community Air Monitoring Plan to be implemented to monitor air quality during removal activities.
- NYS Department of Labor requirements for asbestos abatement.



Project Details and Next Steps

- Town plans to select removal contractor within 30 days after approval of Material Removal Work Plan.
- Removal of material estimated to take 120 days.
- Designated truck routes to be established for transport of material to disposal facilities.
- Trucks to be lined and covered.
- Community Outreach and Citizen Participation to continue throughout the project .



Air Monitoring Equipment



Particulate Monitoring Meter



Air Quality will be Monitored



For More Information

- The Draft Material Removal Work Plan is available at the Brentwood Public Library, the NYSDEC office in Stony Brook and Town of Islip offices.
- The Town of Islip has also posted the work plan and other site info on their web site. It is also physically available at town of Islip Clerk's office at 655 Main Street, Islip.
- Individuals with questions about the work plan can also contact the NYSDEC's office of communications at (631) 444-0350.
- Comment period ends on October 20, 2014.



Contact Information

NYSDEC

Phone: (631) 444-0350

Email: R1info@dec.ny.gov

Suffolk County Dept. of Health

Phone: (631) 854-0088

Email:

NYS Department of Health

Phone: (518) 402-7860

Phone: (800) 458-1158

Email: BEEI@health.ny.gov

NYS Department of Labor

Barbara Eisenberg Phone:
(212) 775-3562

Email:

[Barbara.Eisenberg@labor.
ny.gov](mailto:Barbara.Eisenberg@labor.ny.gov)

Town of Islip

Phone: (631) 224-5411

Email: [commissioner-
rec@townofislip-ny.gov](mailto:commissioner-rec@townofislip-ny.gov)



QUESTION AND ANSWER

NYSDEC is accepting comments on the Plan through **October 20, 2014**. You may send these to:

Ajay Shah, P.E. - NYSDEC

Regional Administration

50 Circle Road

Stony Brook, NY 11790-3409

Phone: (631) 444-0350

[Email: R1info@dec.ny.gov](mailto:R1info@dec.ny.gov)

NYSDEC will evaluate comments and, if necessary, will make changes to the Plan. Notice of the Department's final decision on the Plan will be made to the public.





THANK YOU