

# SITE PLAN

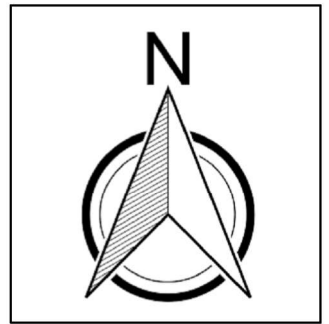
100 W Main St

East Islip, NY 11730

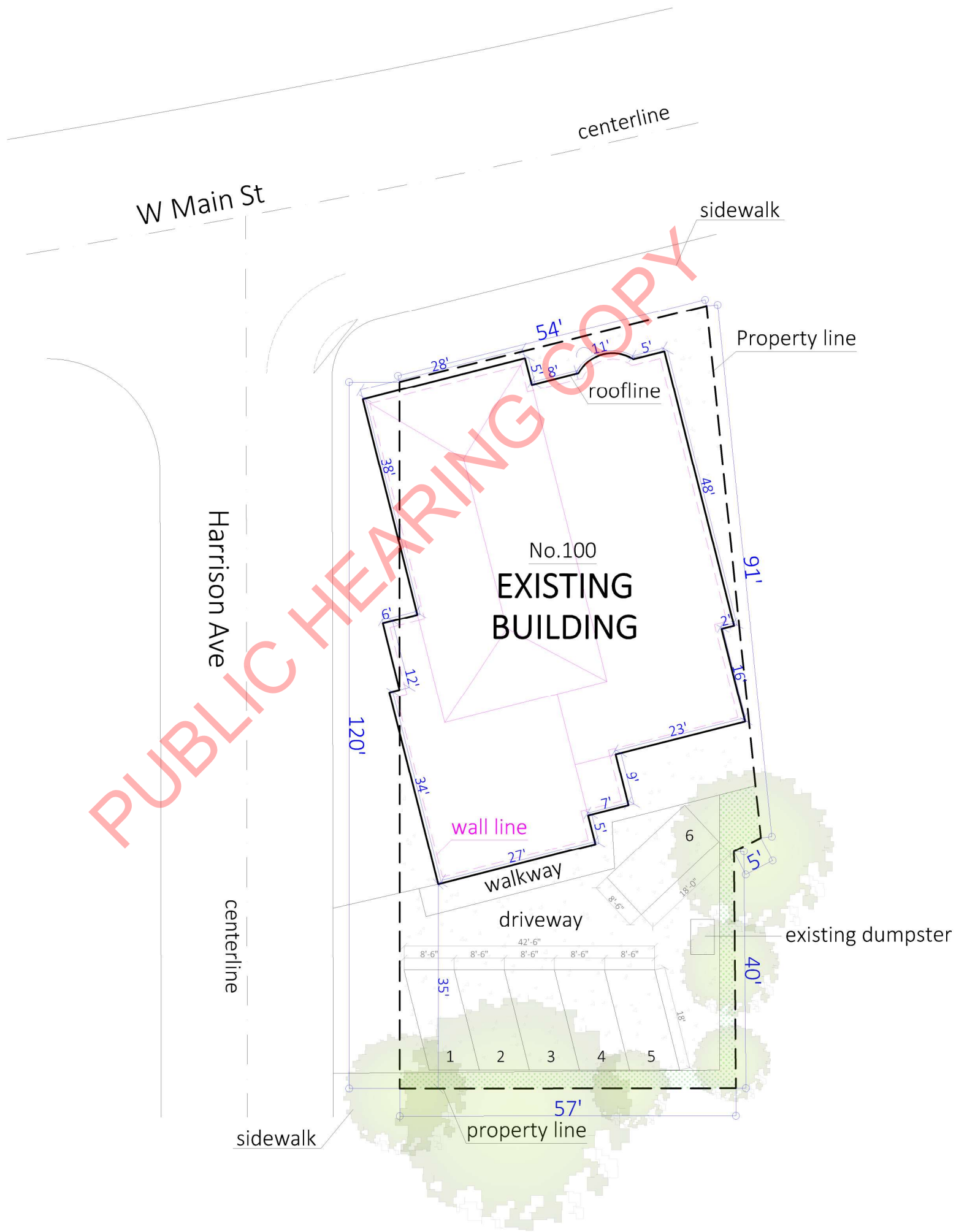
Parcel ID: 0500-372.00-04.00-001.000

Lot area: 0.16 Acres

Paper Size: 11"x17"



scale 1"=20'



PUBLIC HEARING COPY

## LEGEND

-  CONCRETE
-  GRASS

The posted plan is subject to change. Please note that this site plan may be modified during the Town Planning Board and/or Town Board review process. Please contact the assigned planning department staff member if you have questions regarding the date and status of any posted graphics.

LANDSCAPING	
TOTAL AREA	330 SQ. FT.

PARKING	
PARKING 1-5	723 SQ. FT.
PARKING 6	153 SQ. FT.
TOTAL AREA	876 SQ. FT.